



M

emory Support at Brooking Park

Secure surroundings and a highly skilled staff provide specialized therapies to enhance the well-being of individuals with Alzheimer's disease and other memory-related conditions, in a supportive and nurturing environment. Friends and families also enjoy the peace of mind that comes from knowing this care is offered in a supportive and nurturing environment.

Accommodations, Services and Amenities:

24-hour skilled staff

Collaboration with physicians

Physical, speech and occupational therapies

In-house medical and dental care

Chef-prepared meals

Private and semiprivate suites

Daily housekeeping

Computerized call system

Personalized laundry

Spiritual, social and recreational activities

24-hour security and wander-alert systems

Specialized programs for Alzheimer's disease/dementia

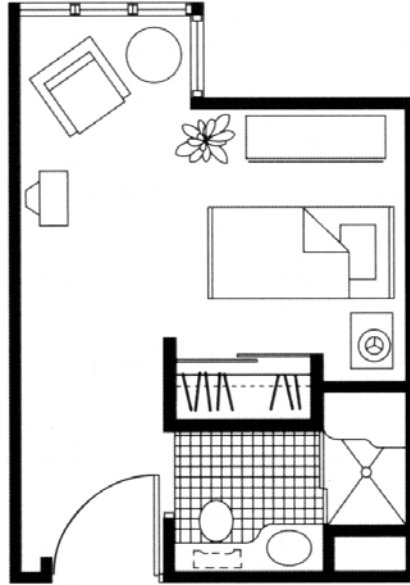
307 South Woods Mill Road Chesterfield, MO 63017

Phone 314-576-5545 • www.brookingpark.org

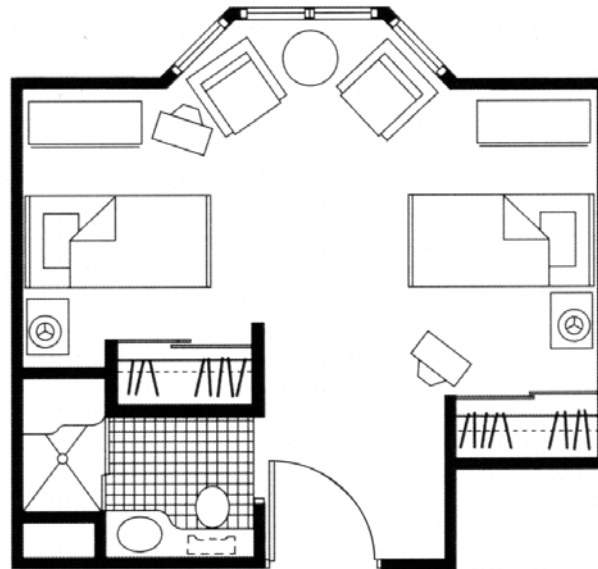




Memory Support Accommodations



Private Suite.



Semi-Private Suite.